

Roma 18/12/13

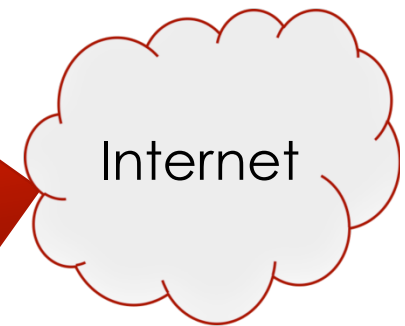


The REFIRE User interface for the proof of concept

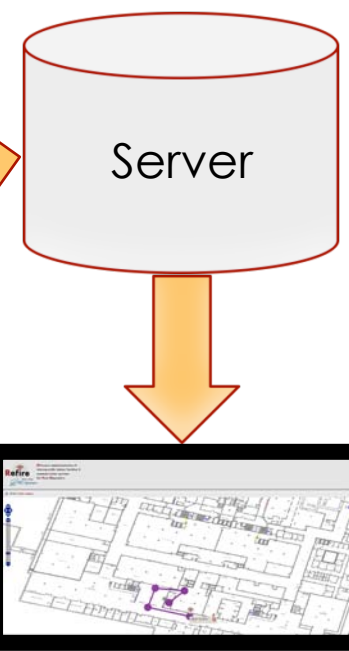
Ing. Uberto Delprato – u.delprato@i4es.it
IES Solutions srl

With the financial support of the Prevention, Preparedness and
Consequence Management of Terrorism and other Security related
Risks Programme European Commission – Directorate General
Home Affairs

REFIRE Prototype



REFIRE Prototype



With the financial support of the Prevention, Preparedness and Consequence Management of Terrorism and other Security related Risks Programme European Commission – Directorate General Home Affairs

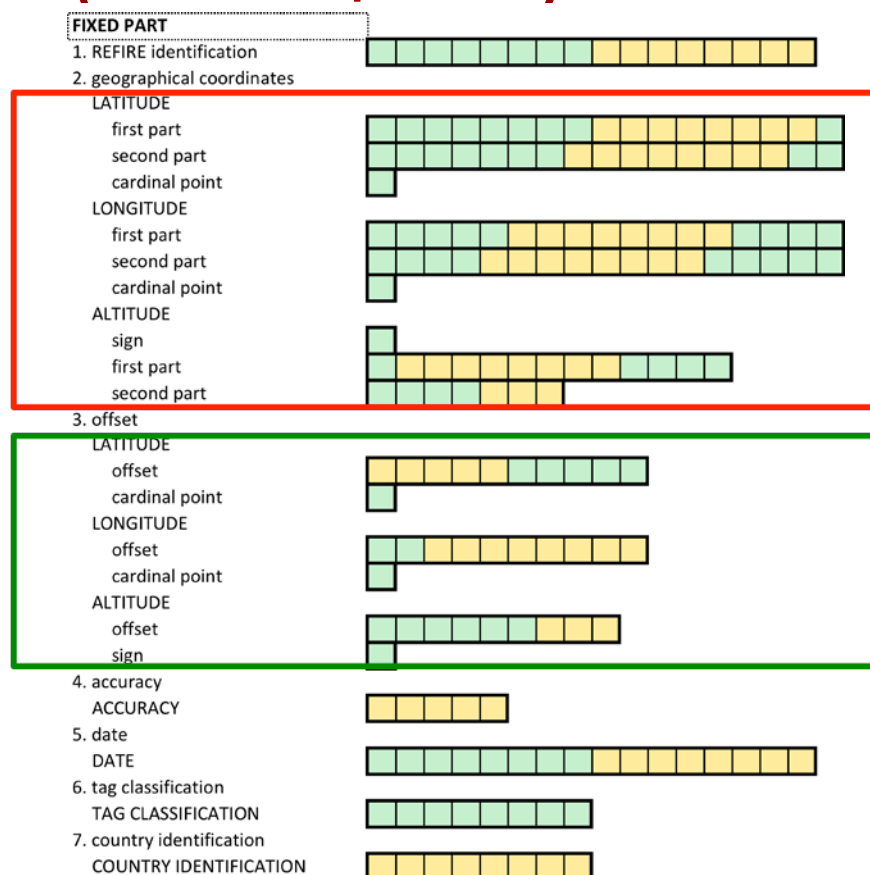
Roma 18/12/13

REFIRE: use of the standard

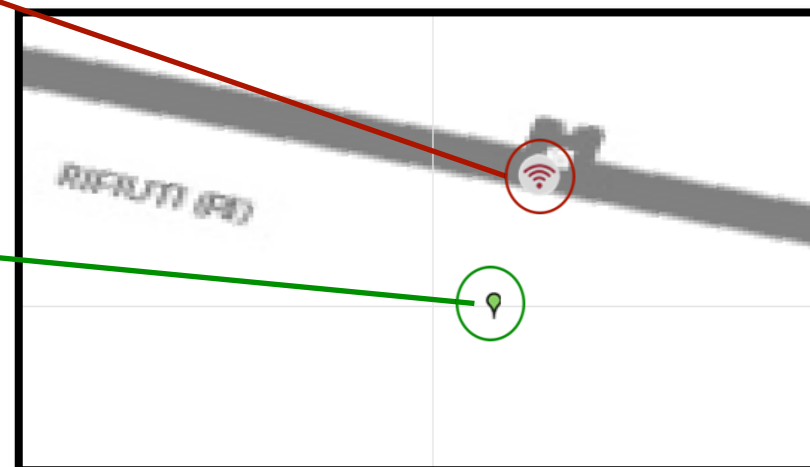
- The user memory of each tag is configured with a set information concerning:
 - Location
 - Date of installation
 - Accuracy
 - Tag classification
- and (optional):
 - Information about the area of installation
 - Hazards and safety resources
 - Free text



REFIRE: user memory (fixed part)

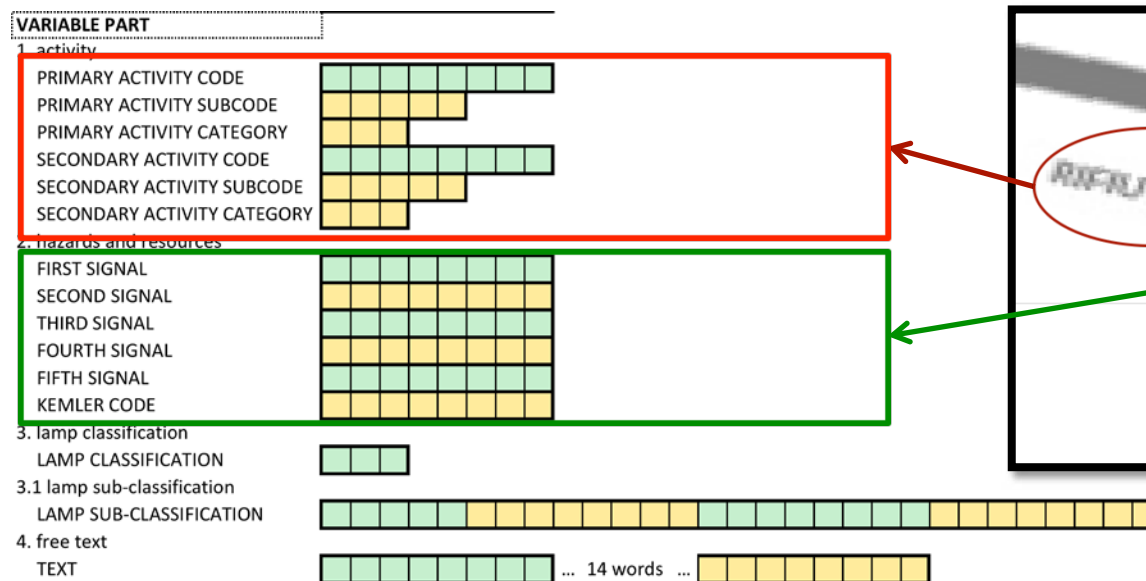


- 176 bit (or 22 words)
- mandatory



REFIRE: user memory (variable part)

- 336 bit (or 42 words)
- optional



REFIRE: user memory (complete content)

www.refire.org

	BIN	HEX	ASCII
FIXED PART			
1. REFIRE identification	1 1 0 1 0 0 1 0 1 1 0 0 0 0 1 0 1	D2 C5	" =
2. geographical coordinates	0 0 0 0 1 0 0 0 0 0 0 1 1 0 0 1	08 19	
	0 0 0 0 1 0 1 1 1 1 0 1 1 1 0 0	0B DC	€
	1 1 0 0 0 0 0 0 0 0 1 0 0 1 1 0 0	C0 4C	č L
	1 1 0 0 0 0 0 0 0 0 1 1 1 1 0 0 1	C0 79	č y
	0 1 1 1 0 0 0 0 0 0 0 0 0 0 0 1 0	70 02	p
	1 1 1 1 0 1 1 1 1 1 0 0 0 0 0 0 1	F7 81	~ Å
	1 0 1 0 0 1 0 0 0 0 0 0 1 0 0 1 1	A4 13	š
5. date	1 0 1 1 1 1 0 0 0 0 0 1 0 0 1 1 0	BC 26	° &
6. tag classification, 7. country identification	0 0 0 0 0 0 1 0 1 0 1 0 1 1 0 0	02 AC 01 6E	-- n
VARIABLE PART			
1. activity	0 1 0 0 0 1 0 0 0 0 1 0 1 0 1 1	44 2B	D +
	0 0 0 0 0 0 0 0 0 0 0 0 0 0 0 0	00 00	
2. hazards and resources	0 0 1 0 1 0 1 0 0 0 0 0 0 0 0 0	2A 00	*
	0 0 0 0 0 0 0 0 0 0 0 0 0 0 0 0	00 00	
	0 0 0 0 0 0 0 0 0 0 0 0 0 0 0 0	00 00	
3. lamp classification	0 0 0 1 0 0 0 0 0 0 0 1 0 0 0 1	10 21	!
	1 1 1 0 1 1 0 0 0 0 0 0 0 0 0 1	EC 01	ÿ
4. free text	0 1 0 1 0 0 1 1 0 0 1 0 0 1 0	53 32	S 2
	0 0 1 1 0 0 1 1 0 0 1 0 0 0 0 0	33 20	3
	0 1 0 0 1 0 0 1 0 1 0 1 0 0 1 1 0	49 4E	I N
	0 1 0 0 0 1 1 1 0 1 0 1 0 0 1 0	47 52	G R
	0 1 0 0 0 1 0 1 0 1 0 1 0 0 1 1 1	45 53	E S
	0 1 0 1 0 0 1 1 0 1 0 0 1 1 1 1	53 4F	S O
	0 0 0 0 0 0 0 0 0 0 0 0 0 0 0 0	00 00	
	0 0 0 0 0 0 0 0 0 0 0 0 0 0 0 0	00 00	
	0 0 0 0 0 0 0 0 0 0 0 0 0 0 0 0	00 00	
	0 0 0 0 0 0 0 0 0 0 0 0 0 0 0 0	00 00	
	0 0 0 0 0 0 0 0 0 0 0 0 0 0 0 0	00 00	
	0 0 0 0 0 0 0 0 0 0 0 0 0 0 0 0	00 00	

- Max 512 bit (or 64 words)
- Flashed into the tag after installation
- A semi-automated method for defining the content was developed
- A tool provided by the tag supplier was used for recording



REFIRE: the scenario

- Thick smoke from 2nd floor underground
- 2 rescuers on scene, each of them equipped with a REFIRE device
- They split to survey the floor and search for the cause of the smoke
- Some rooms feature hazards
- The area is surveyed and the fire is located



REFIRE: location

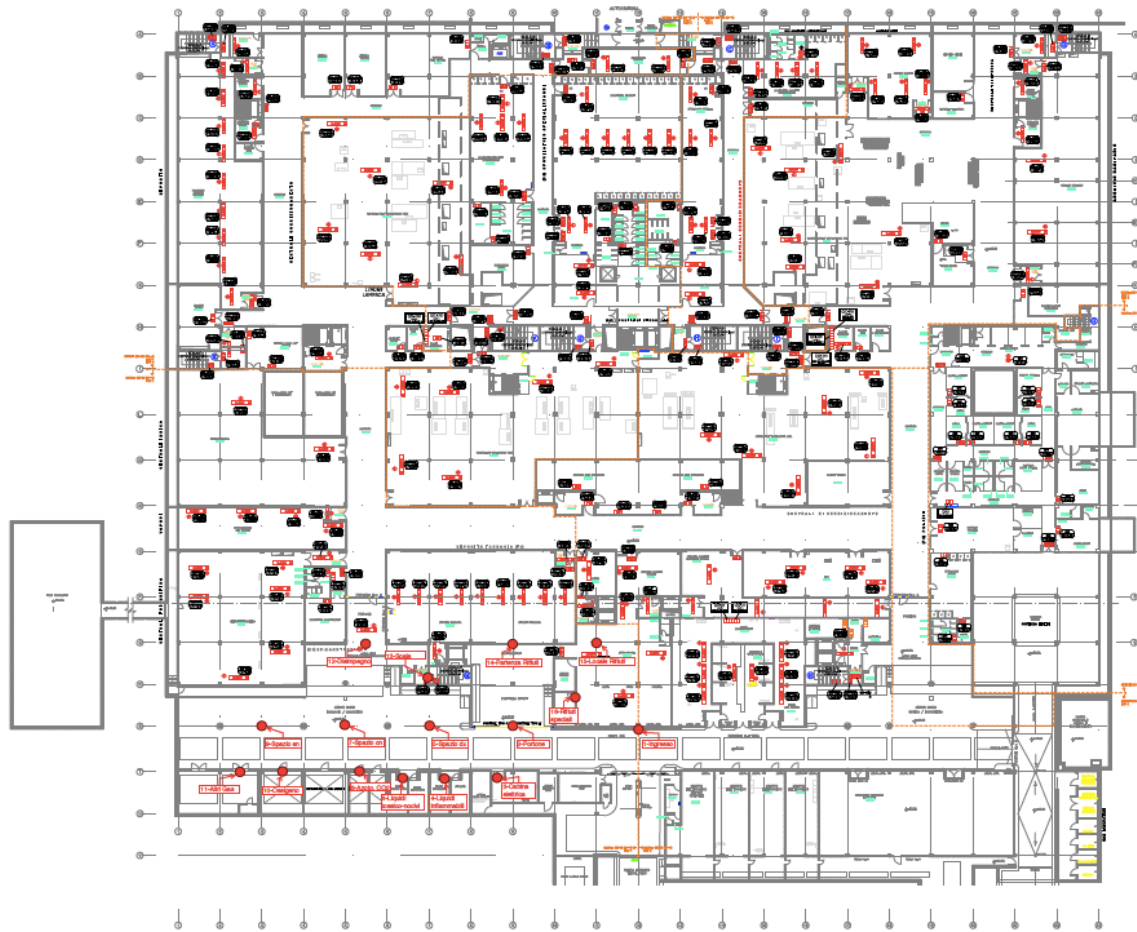


www.refire.org

- CAMPUS Bio-Medico
- Hospital building
- Floor -2
- Technical area



REFIRE: location



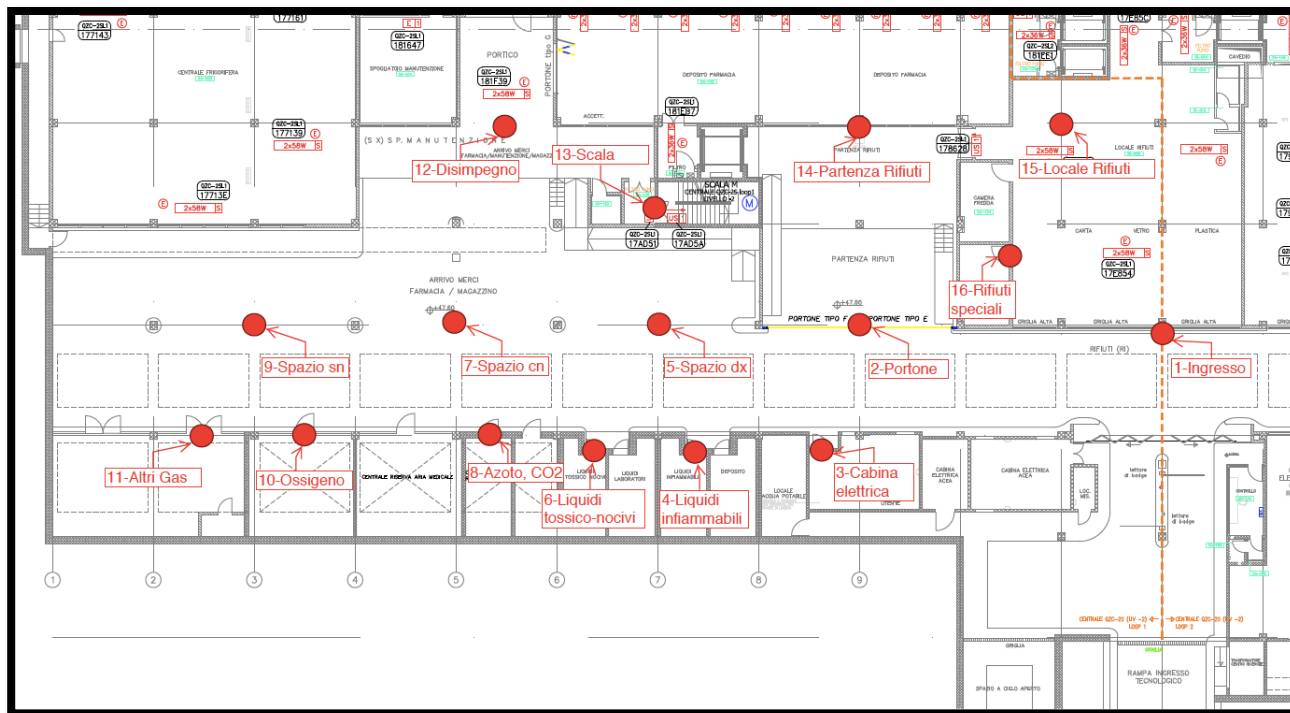
- CAMPUS Bio-Medico
- Hospital building
- Floor -2
- Technical area



REFIRE: location

www.refire.org

■ 16 PILDs

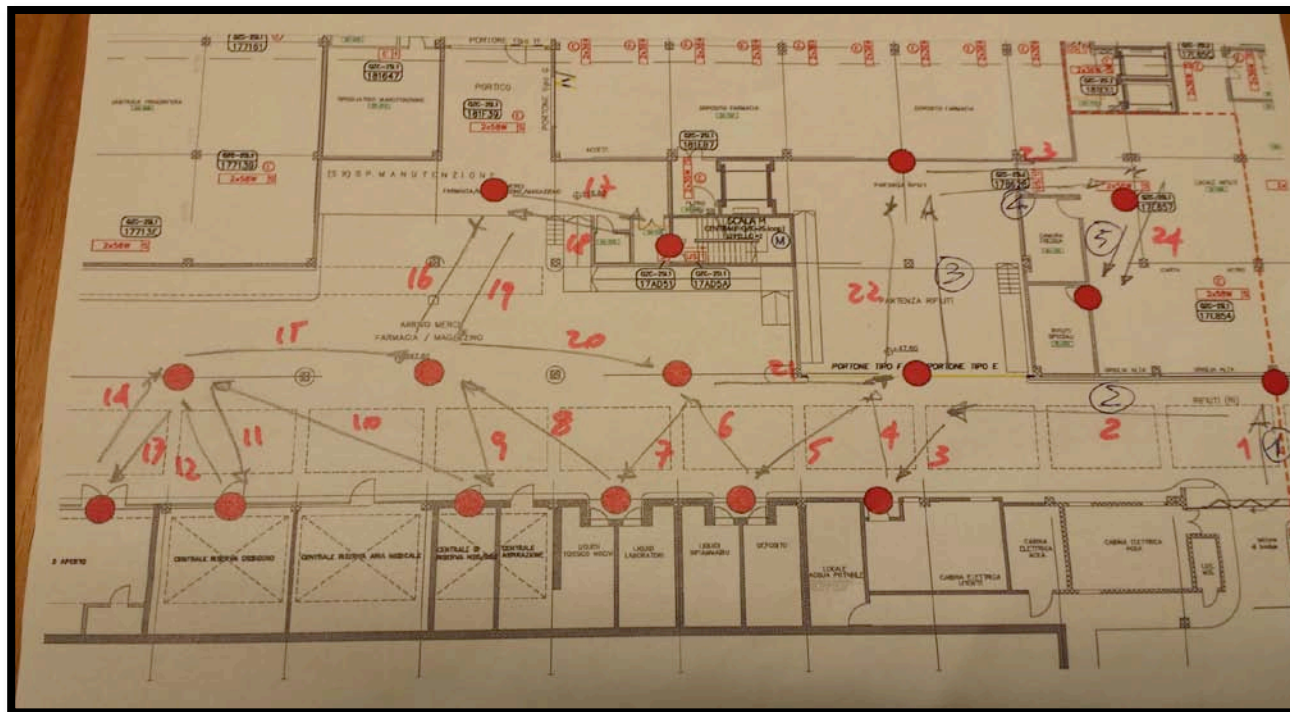


With the financial support of the Prevention, Preparedness and Consequence Management of Terrorism and other Security related Risks Programme European Commission – Directorate General Home Affairs

Roma 18/12/13

REFIRE: search paths

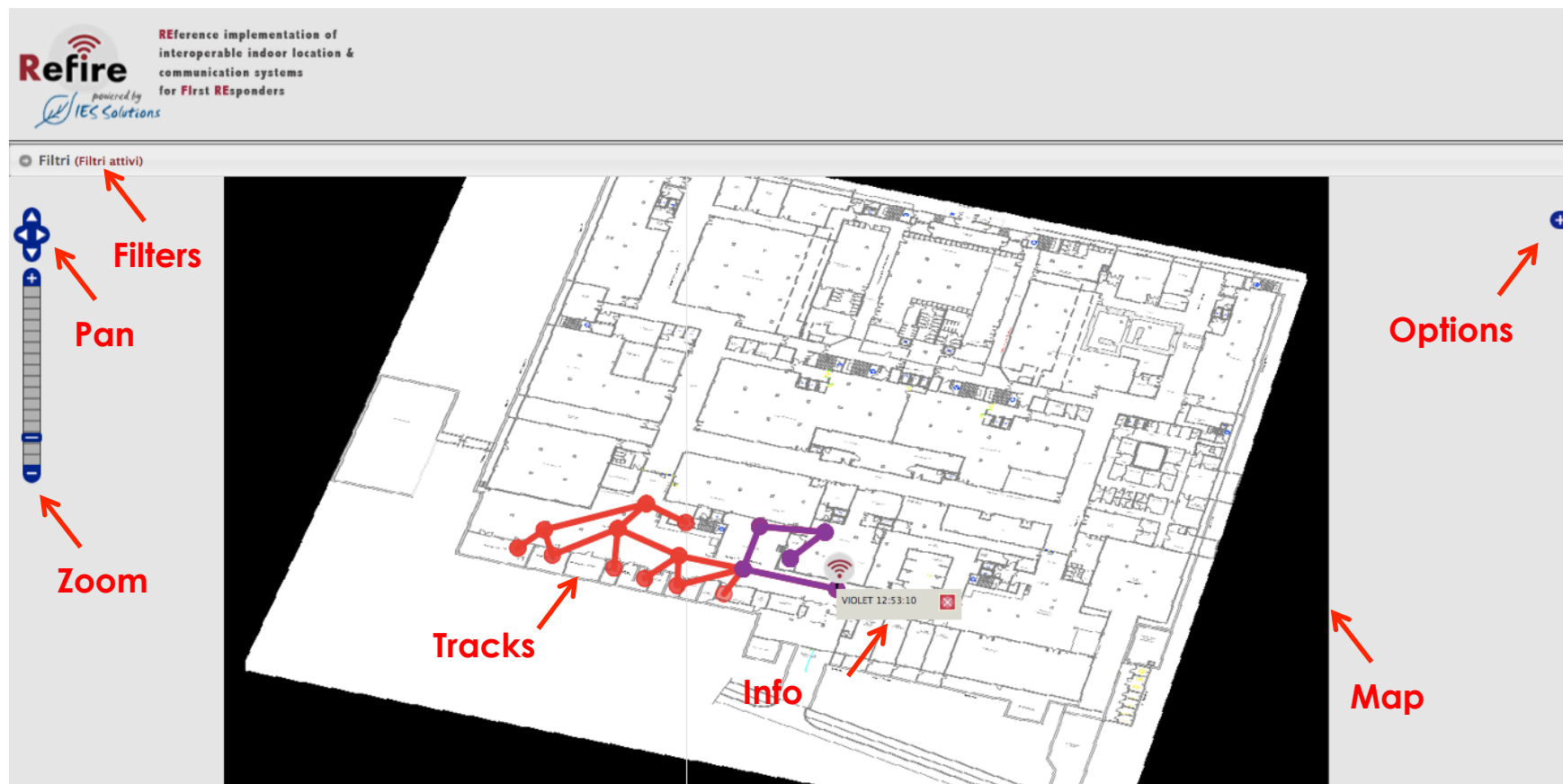
www.refire.org



- 2 rescuers



REFIRE: user interface (full page)



REFIRE: user interface (filters)

Filters : Rescuer, Event, Floor, Date

Pan

Zoom

Options

Map



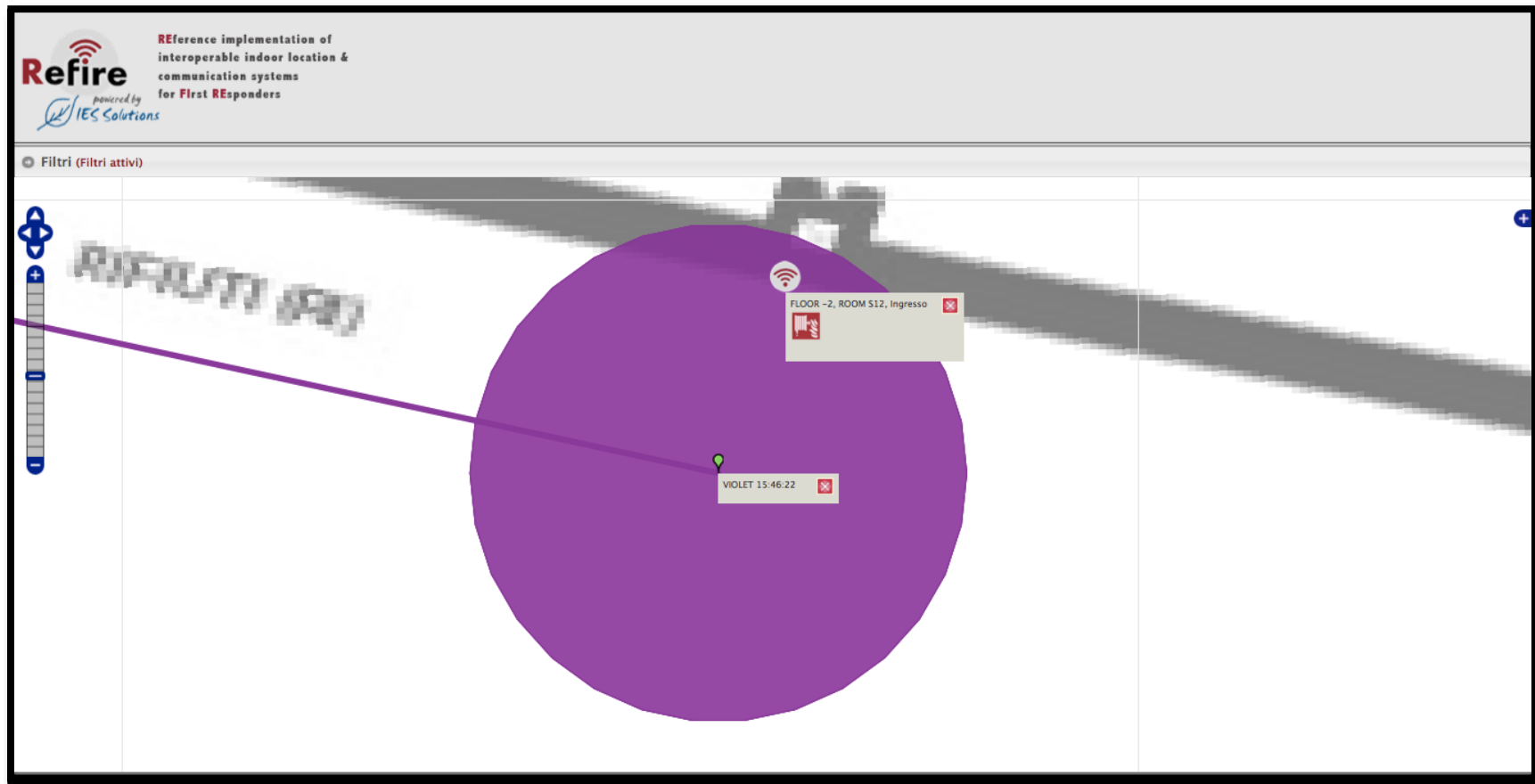
REFIRE: user interface (tracks)

www.refire.org



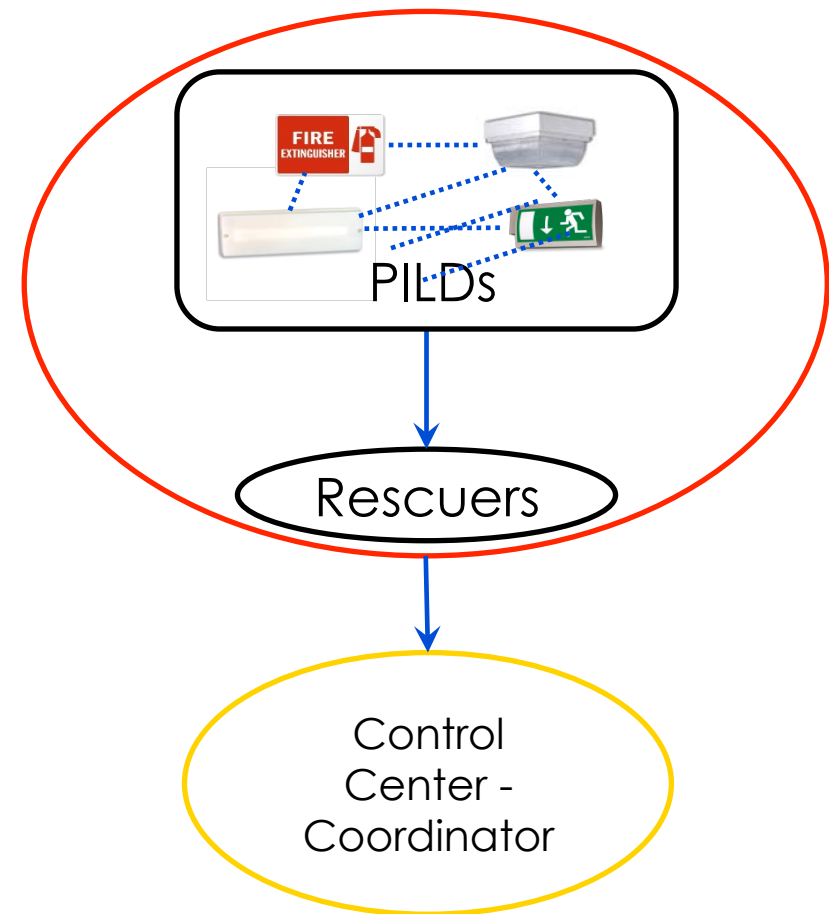
REFIRE: user interface (details)

www.refire.org




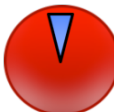
REFIRE: Level 0


- PILDs are used as proximity sensors for localization
- The Mobile Terminal updates its position estimate by using a Calibration Message from the RFID tags
- In this level, only a rough estimate of the position of the rescuers can be computed, by using trivial datafusion approaches.



REFIRE: the demo

 **Refire** PILDs

RED 

VIOLET 

19

www.refire.org



REFIRE: some considerations

- Geo-referred maps are a must
- Retrieving all information for the tags is a time-consuming task
- Configuring the tag may become an expensive task without a simple and automated procedure
- The use of semi-active tags may improve accuracy but would require a level 1 set-up
- Indoor communication must be in place



REFIRE: conclusions from the demo

- The full chain of communication was tested
- The standard was implemented
- Level 0 was demonstrated
- Detailed information were retrieved from the tags
- Some glitches in the flow of messages
- The integration at Level 1 should be very powerful, although with a “dense” infrastructure, Level 0 is a clear improvement



REFIRE: www.refire.org

Many thanks for sharing your thoughts

Ing. Uberto Delprato
u.delprato@i4es.it

IES Solutions
www.i4es.it

